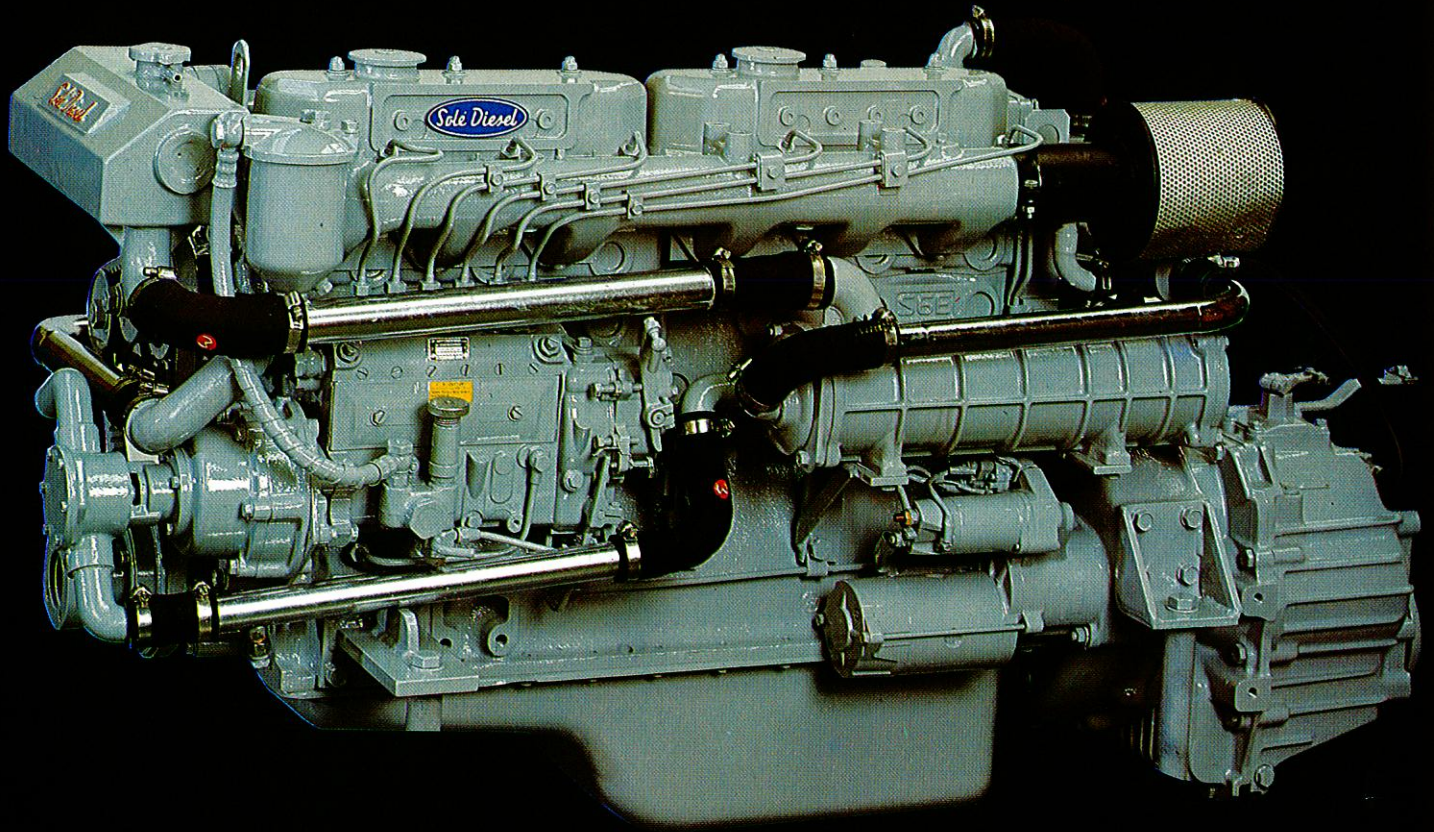


MARINE DIESEL ENGINE

6 Cylinders

122 HP.



Sole Diesel

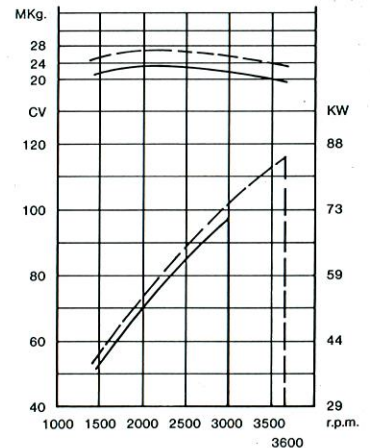
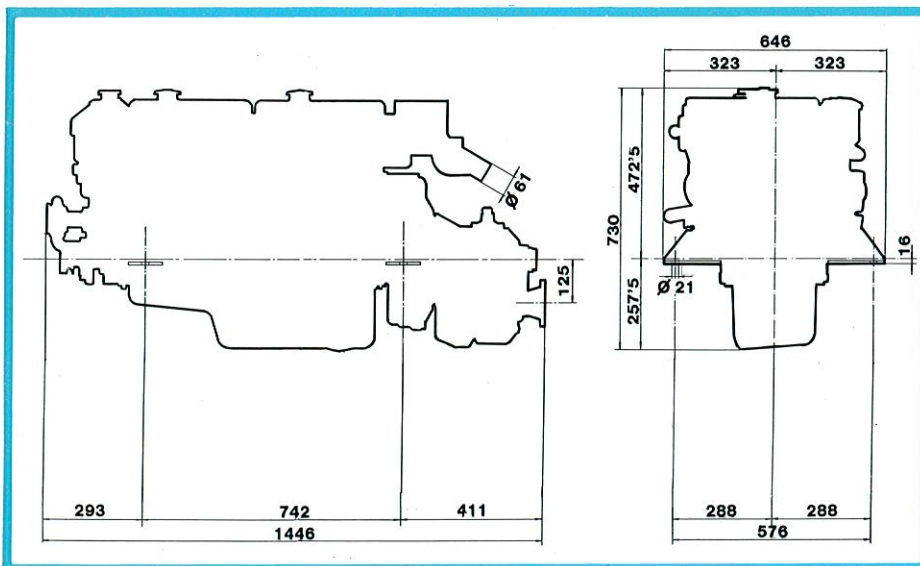
SM-120 ENGINE

SPECIFICATIONS:

N.º of cylinders:	6 in line. Naturally aspirated.
Bore × stroke:	98 mm. × 98 mm.
Cylinder volume:	4.400 cm.3
Compression Ratio:	20 : 1
Power:	DIN 6270-A: 98 Hp. (72 Kw.) at 3.000 r.p.m. DIN 6270-B: 116 Hp. (85,3 Kw.) at 3.600 r.p.m.
Combustion Chamber:	Swirl Combustion chamber.
Cooling sistem:	Enclosed fresh water with heat echanger oil cooler, and cooled exhaust manifold.
Electrical equipment:	24 V. Starter 5 Kw. Alternator 30 A. (Optional 12 V. Alternator 50 A.)
Gear box:	Hurth HBW 360, type - Velvet Drive, type. (Ratio 1,5:1 - 2:1 and 3:1).
Weight with gear-Box:	Hurth 480 Kgs. - Velvet Drive 508 Kgs.
Installation angle:	20°

Standard equipment: Electric starter and alternator, electric stop, electrical panel with wiring, oil filter, cooled exhaust manifold, and Morse control coupling kits.

Optional equipment: Bilge cack, water filter with water trap, Morse remote control, shaft, stern tube and propeller.



Importer

Dealer