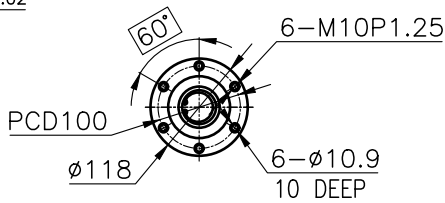
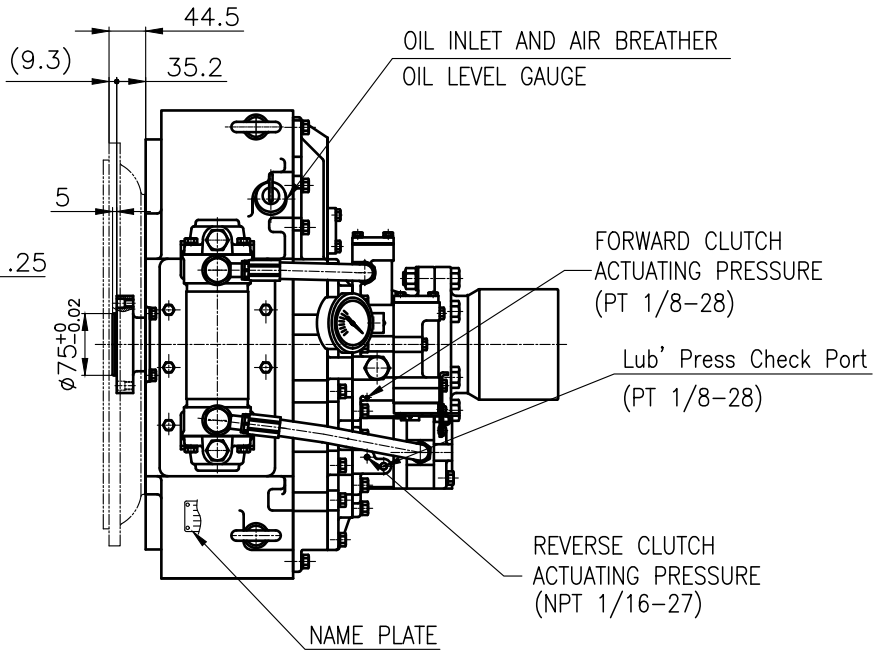


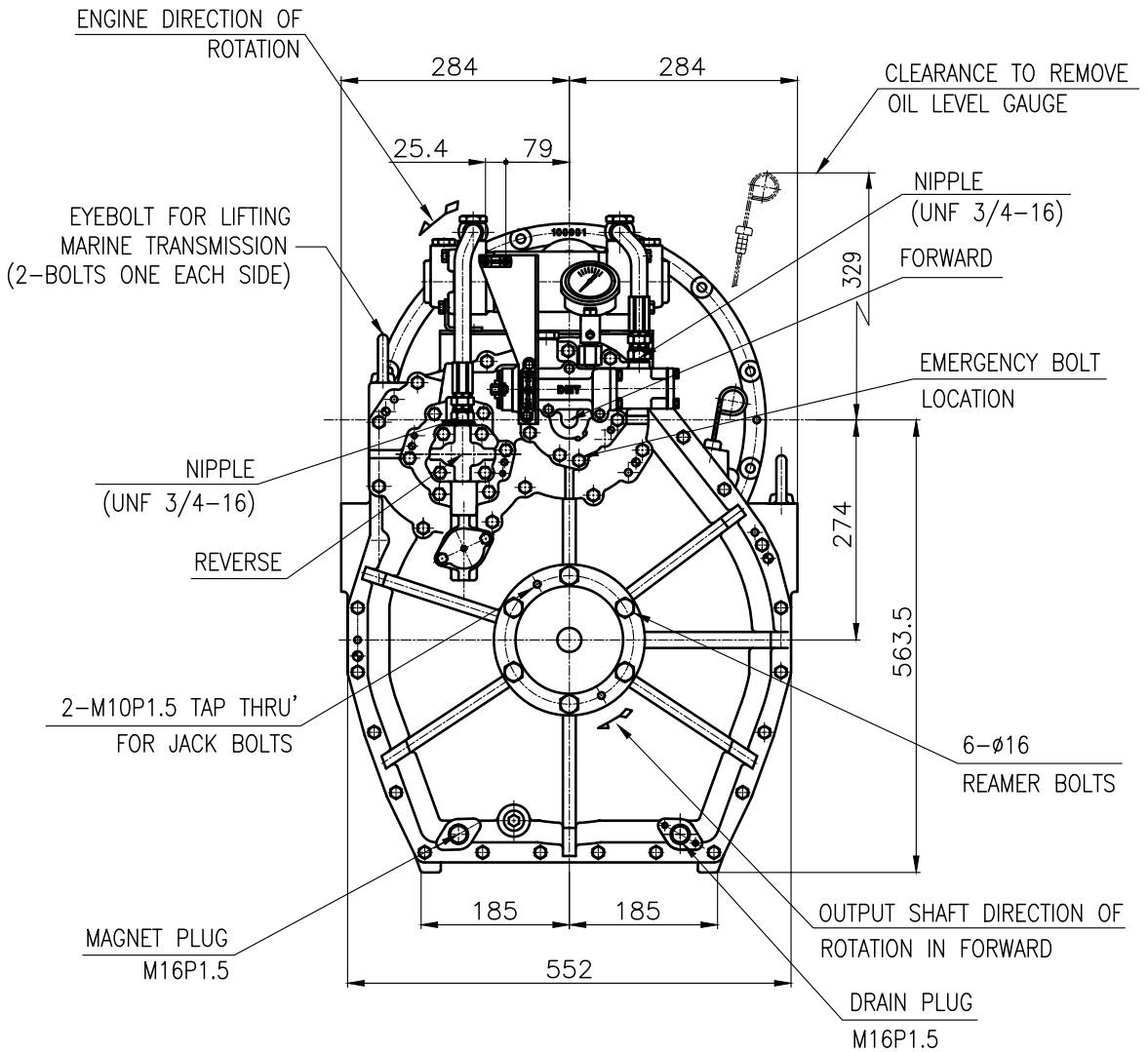
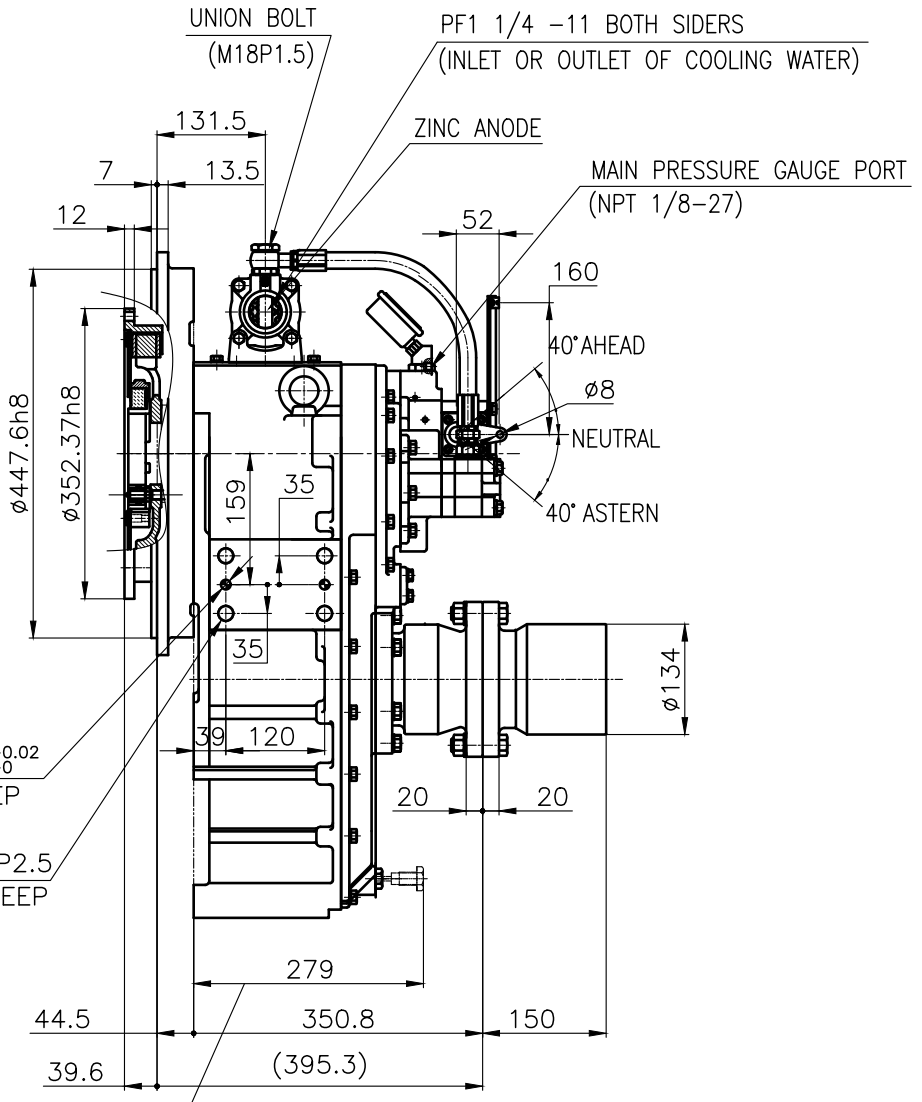
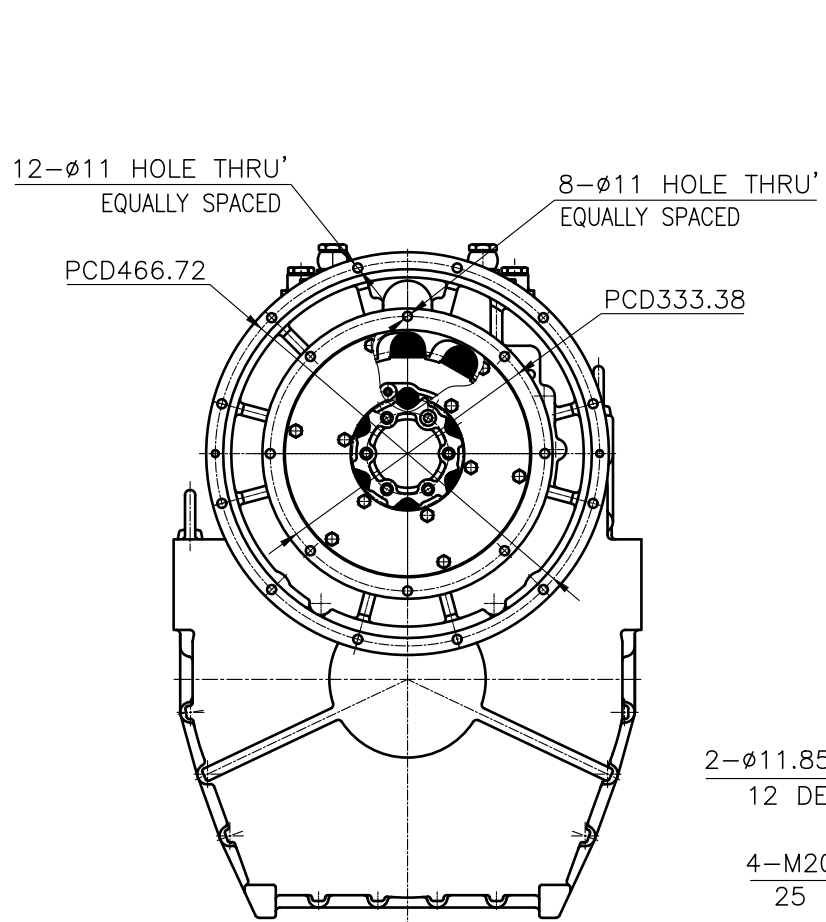
OUTPUT SHAFT COUPLING & PROPELLER COUPLING DIMENSION



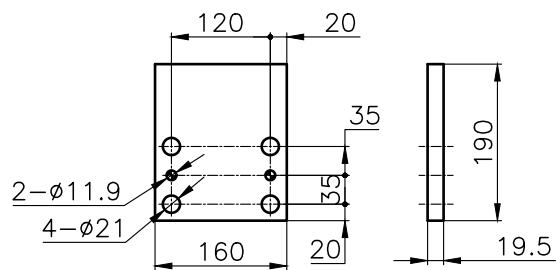
INPUT COUPLING DIMENSION



DMT 100HL MARINE TRANSMISSION SPECIFICATION		
GEAR RATIO	5.29, 5.95, 4.07, 4.50, 4.95	
TOTAL WEIGHT	APPROX. 263 kg(DRY)	
OIL CAPACITY	APPROX. 9.5L	
OIL VISCOSITY	SAE # 30	
OIL PRESSURE	1.96 ~ 2.54 MPa	CLUTCH OIL
DIRECTION OF ROTATION	INPUT	C.C.W VIEWED FROM THE STERN
	OUTPUT	C.W VIEWED FROM THE STERN
OIL CHANGE INTERVAL	THE FIRST 100HOURS OF INITIAL OPERATION AND EVERY 1000HOURS THEREAFTER	
SHIFTING LIMIT	UNDER 50% OF THE RATED ENGINE SPEED	
OIL COOLER	WATER FLOW 40 ~ 60L/min	
	TEMPERATURE OF COOLING WATER	MAX 32°C
OPERATING TORQUE OF SHIFTING LEVER	UNDER 2.94Nm	

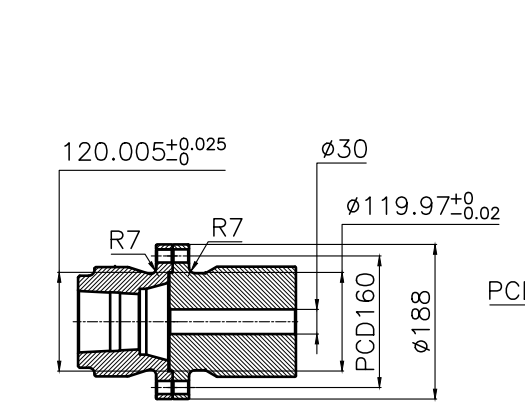


REMARK  
 1.HOUSING: SAE#2  
 2.DRIVING RING: SAE 11.5"  
 3.COUPLING TYPE : DUAL STAGE  
 4.APPLICATION ENGINE : STANDARD

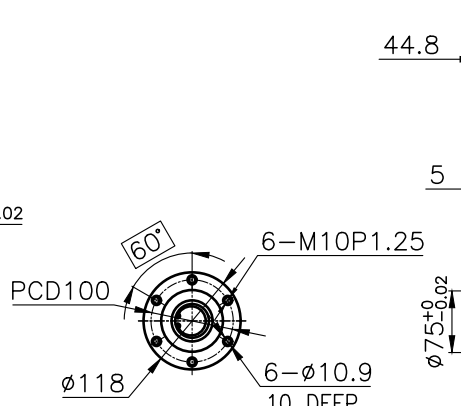


BRACKET DIMENSION

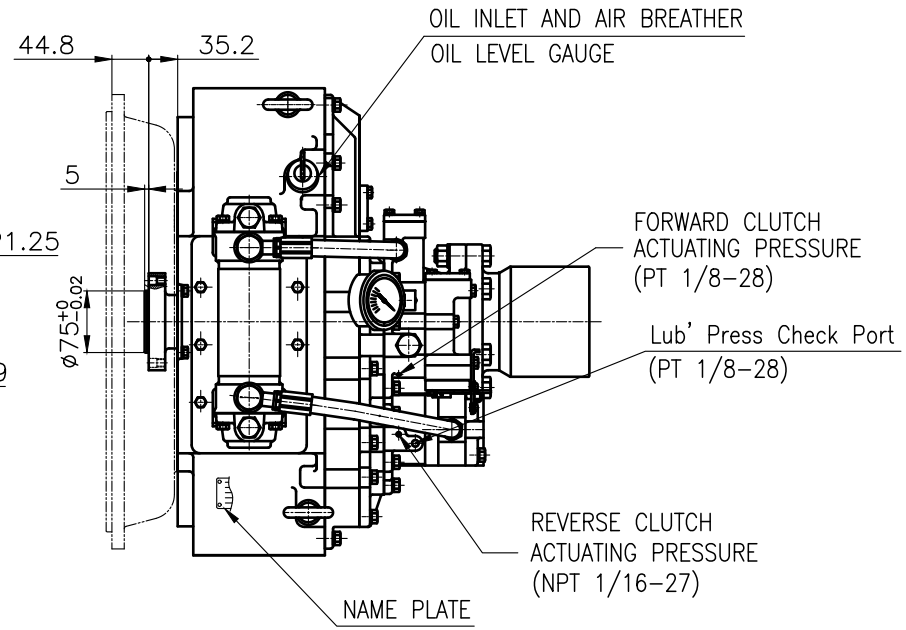
TOLERANCE ON				PART NO.		PART NAME		Q'TY		MATERIAL		SIZE		REMARKS																							
FRACTIONS	DECIMALS	ANGLES		NO.		NAME		TYPE		MATERIAL		SIZE		REMARKS																							
±	±	±	±	JK.Kim		TH.Cha		CH.Baek		DMT100HL		MARINE TRANSMISSION		원도번호 ORIGINAL DWG. NO.																							
<table border="1"> <tr> <th>구분</th> <th>조급</th> <th>중급</th> <th>정급</th> </tr> <tr> <td>1초과 4 이하</td> <td>± 0.3</td> <td>± 0.1</td> <td>± 0.05</td> </tr> <tr> <td>4</td> <td>± 0.5</td> <td>± 0.2</td> <td>± 0.07</td> </tr> <tr> <td>16</td> <td>± 0.7</td> <td>± 0.3</td> <td>± 0.1</td> </tr> <tr> <td>63</td> <td>± 1.2</td> <td>± 0.5</td> <td>± 0.2</td> </tr> <tr> <td>250</td> <td>± 2.0</td> <td>± 0.8</td> <td>± 0.3</td> </tr> </table>				구분	조급	중급	정급	1초과 4 이하	± 0.3	± 0.1	± 0.05	4	± 0.5	± 0.2	± 0.07	16	± 0.7	± 0.3	± 0.1	63	± 1.2	± 0.5	± 0.2	250	± 2.0	± 0.8	± 0.3	작성 DATE 2018.06.20 SCALE N/S		승인 BY JK.Kim 검토 BY TH.Cha 제도 CH.Baek		TYPE MARINE TRANSMISSION		도번 DWG. NO. 10000GHA-E-2115DC		개칭 (REV.) 000	
구분	조급	중급	정급																																		
1초과 4 이하	± 0.3	± 0.1	± 0.05																																		
4	± 0.5	± 0.2	± 0.07																																		
16	± 0.7	± 0.3	± 0.1																																		
63	± 1.2	± 0.5	± 0.2																																		
250	± 2.0	± 0.8	± 0.3																																		
D-I INDUSTRIAL										크기 SIZE A 3		코드번호 CODE ID. NO.																									



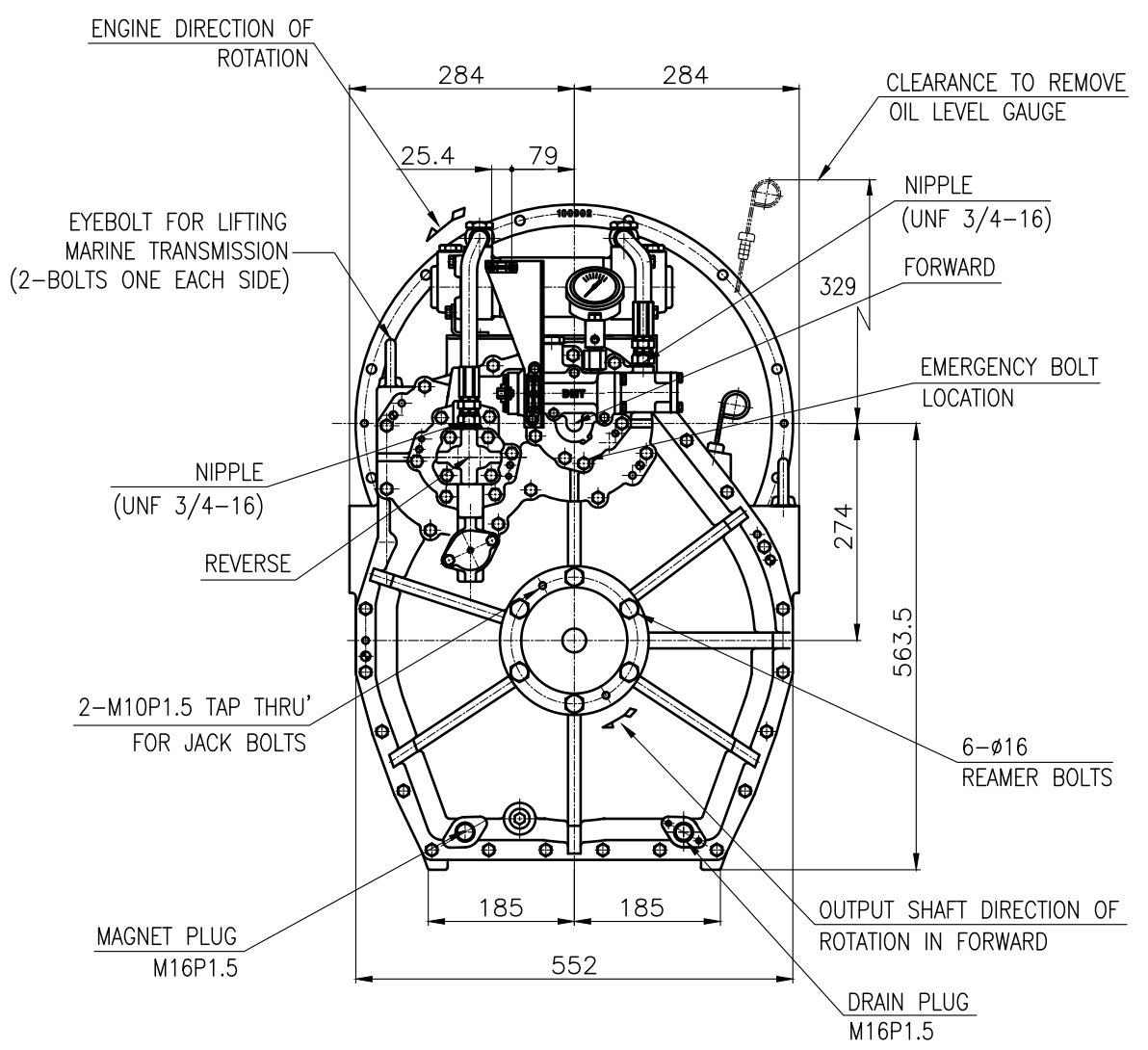
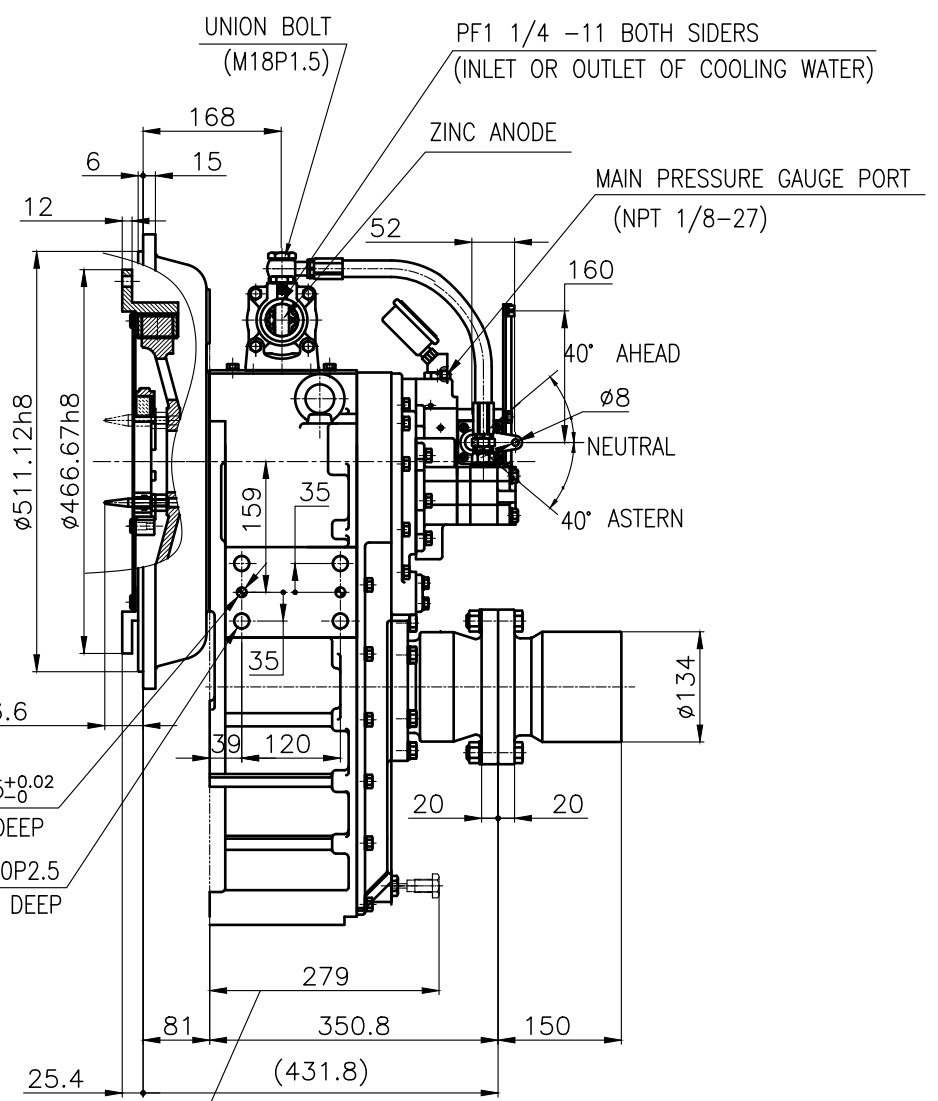
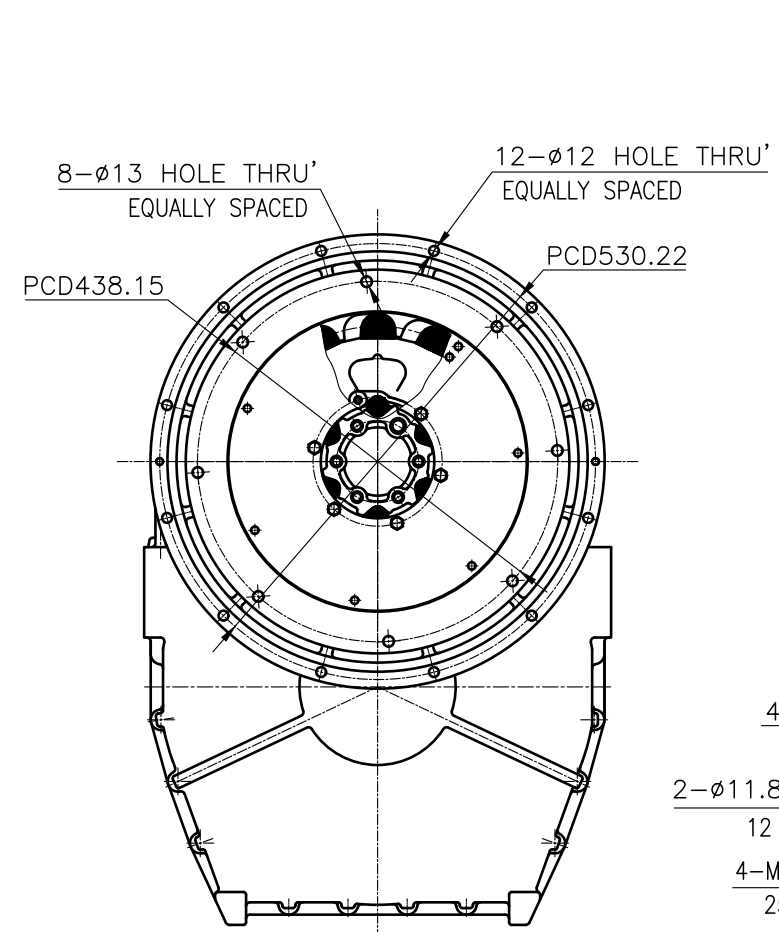
OUTPUT SHAFT COUPLING & PROPELLER COUPLING DIMENSION



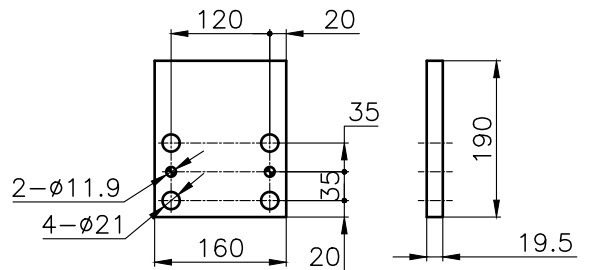
INPUT COUPLING DIMENSION



DMT 100HL MARINE TRANSMISSION SPECIFICATION		
GEAR RATIO	5.29, 5.95, 4.07, 4.50, 4.95	
TOTAL WEIGHT	APPROX. 263 kg(DRY)	
OIL CAPACITY	APPROX. 9.5L	
OIL VISCOSITY	SAE # 30	
OIL PRESSURE	1.96 ~ 2.54 MPa	CLUTCH OIL
DIRECTION OF ROTATION	INPUT	C.C.W VIEWED FROM THE STERN
	OUTPUT	C.W VIEWED FROM THE STERN
OIL CHANGE INTERVAL	THE FIRST 100HOURS OF INITIAL OPERATION AND EVERY 1000HOURS THEREAFTER	
SHIFTING LIMIT	UNDER 50% OF THE RATED ENGINE SPEED	
OIL COOLER	WATER FLOW 40 ~ 60L/min	
	TEMPERATURE OF COOLING WATER	MAX 32°C
OPERATING TORQUE OF SHIFTING LEVER	UNDER 2.94Nm	



- REMARK  
 1.HOUSING: SAE#1  
 2.DRIVING RING: SAE 14"  
 3.COUPLING TYPE : DUAL STAGE  
 4.APPLICATION ENGINE : STANDARD



TOLERANCE ON			번호 NO.	품 PART NO.	품 PART NAME	개수 QTY	재 MATERIAL	규 SIZE	비 REMARKS	
분수 FRACTIONS	소수 DECIMALS	각도 ANGLES	제 MATERIAL		형 식 TYPE	DMT100HL ORIGINAL DWG. NO.				
±	±	±	작성 DATE 2018.06.20	척도 SCALE N/S	품 명 NAME MARINE TRANSMISSION	개형 (REV.) 000				
검사 가 공			승 인 APPROVED BY JK.Kim	검 도 CHECKED BY TH.Cha	제 도 DRAWN CH.Baek	도 번호 DWG. NO. 10000GHA~E-114DC				
구 1	분 16	초 4	D-I INDUSTRIAL			크 기 SIZE A 3	코-드 번호 CODE ID. NO.			
± 0.3	± 0.1	± 0.05	SHEET 1 OF 1			공기기술-004(84x594)				