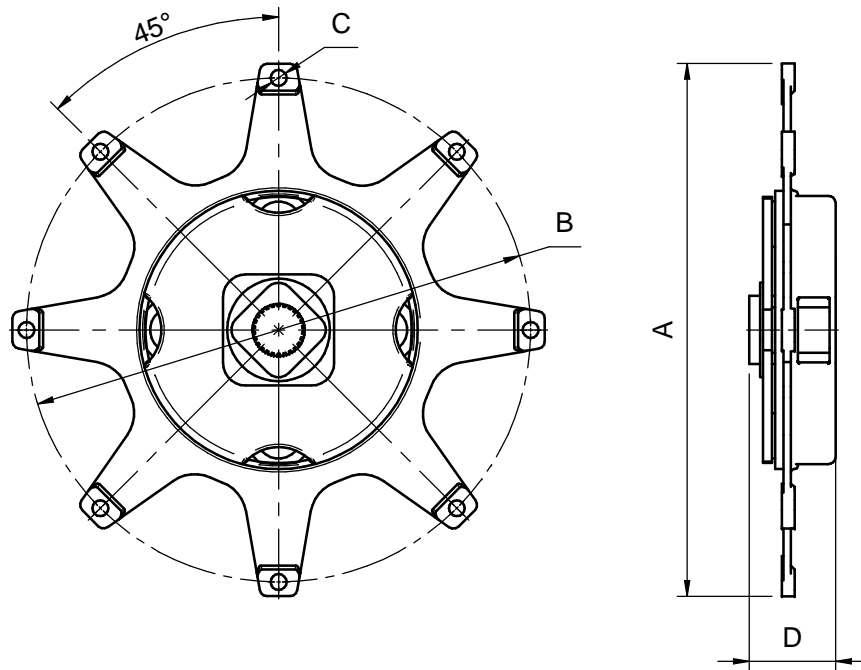



TABLA DE DIMENSIONES Y REFERENCIAS
TABLE OF DIMENSIONS AND PART NUMBERS



Eje estriado Splines shaft	A	B	C	D	SAE	Par Max. (Nxm) Torque Max. (Nxm)	Ref.
SAE 20/40 DP Z=26	352.4	333.4	8x \varnothing 10.5	57	11" 1/2	700 520 420	16510170
19MM. 24/48 DP,Z=17	352.4	333.4	8x \varnothing 11	---	11" 1/2	700 520 420	16510171
SAE 1" Z=10	352.4	333.4	8x \varnothing 11	---	11" 1/2	700 520 420	16510172
SAE 20/40 DP Z=26	352.4	333.4	8x \varnothing 11	---	11" 1/2	1000 800 600	16710070
SAE 12/24 DP Z=14	352.4	333.4	8x \varnothing 11	48,7	11" 1/2	400	17510243.2

* ** ***

Uso-Service: *Ocio-Pleasure **Intermedio-Intermediate ***Uso intenso-Heavy duty

ACOPLAMIENTOS ELASTICOS TIPO C				
FLEXIBLE COUPLINGS, TYPE C				
MATERIAL	ACABADO	TRATAMIENTO	PRESENTACION	ESCALA
DIBUJADO	VERIFICADO	GRADO PRECISION	FECHA CREACION	ULTIMA REVISION
XAVIER	S. UBACH		05/02/2015	---
 SOL, S.A.		4903		