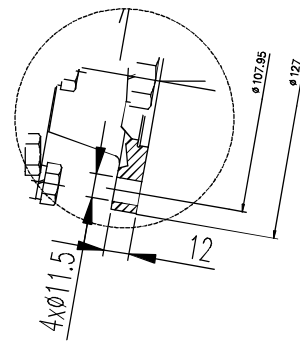
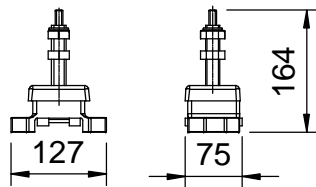


DETALLE A  
DETAIL A

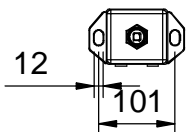


DATOS TÉCNICOS – TECHNICAL DATA

- (1) Entrada agua salada. Conectar manguera Ø42 mm.  
Sea water inlet. Use water hose Ø42 mm.
- (2) Manguera entrada combustible = Ø12 mm.  
Fuel hose inlet = Ø12 mm.
- (3) Manguera Retorno combustible = Ø12mm  
Fuel return hose = Ø12 mm.



Suspensor (Engine mount): 61691000  
(Carga /Load: 300Kg, Dureza/Hardness: 75 Sh A)  
(opcional / optional)



Medidas Nominales (mm)		MOTOR SDZ-280 24V CON INV. TM-880A R.2:1				
		SDZ-280 24V ENGINE WITH TM-880A R.2:1 GBOX.				
		MATERIAL	ACABADO	TRATAMIENTO	PRESENTACIÓN	ESCALA
100	a	---	---	---	---	1:1
30	a	---	---	---	---	---
6	a	---	---	---	---	---
0	a	DIBUJADO DANIEL B.	VERIFICADO S. UBACH	GRADO PRECISIÓN MEDIO	FECHA CREACIÓN 06/05/2014	ÚLTIMA REVISIÓN ---
Grado de Precisión DIN-7168	Fino	±0.05	±0.1	±0.15	±0.2	
	Medio	±0.1	±0.2	±0.3	±0.5	
	Basto	±0.2	±0.5	±0.8	±1.2	
				SOLÉ, S.A.		19632483.1
						---